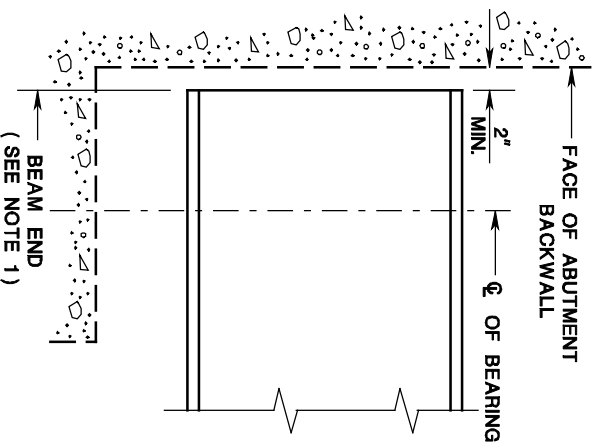


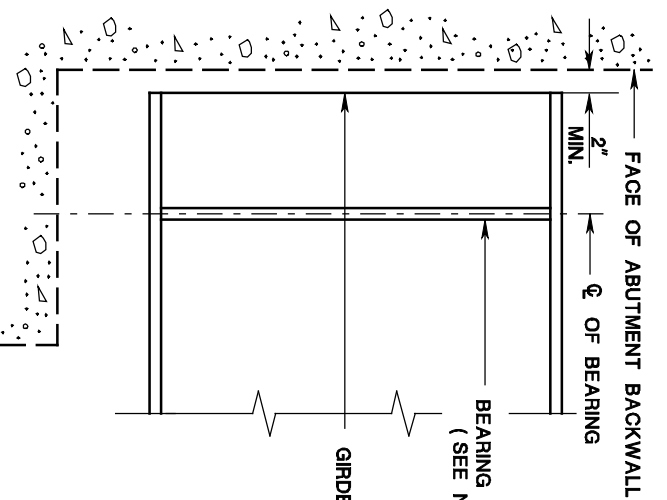
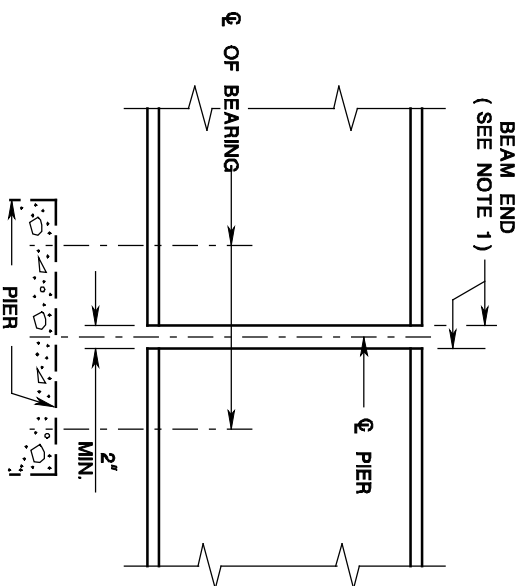
# FASCIA BEAM END CLEARANCES

ISSUED: 2009

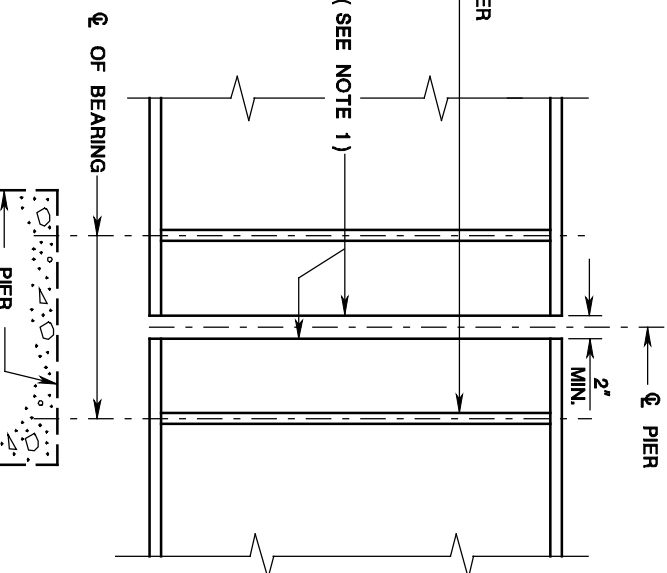
PLATE  
3.9-22



## ROLLED BEAMS



## WELDED GIRDERS



### NOTES:

1. BEAM ENDS, GIRDER ENDS AND BEARING STIFFENERS SHALL BE NORMAL TO FLANGE.
2. FOR PRESTRESSED BEAMS, PROVIDE MINIMUM CLEARANCE OF 4' BETWEEN BEAM END AND ABUTMENT BACKWALL AND 3' BETWEEN BEAM ENDS AT PIER LOCATIONS.